



## 75 Koolan Crescent SHAILER PARK QLD

4  2  2 

Welcome to 75- 77 Koolan Crescent, a tranquil family home nestled against a beautiful bushland backdrop in the prestigious Koolan Precinct. Having enjoyed some carefully crafted renovations, this warm and welcoming home is set to provide your family with many happy memories to come. Cleverly designed for modern family living, the home offers a sublime atmosphere for both intimate home life and entertaining.

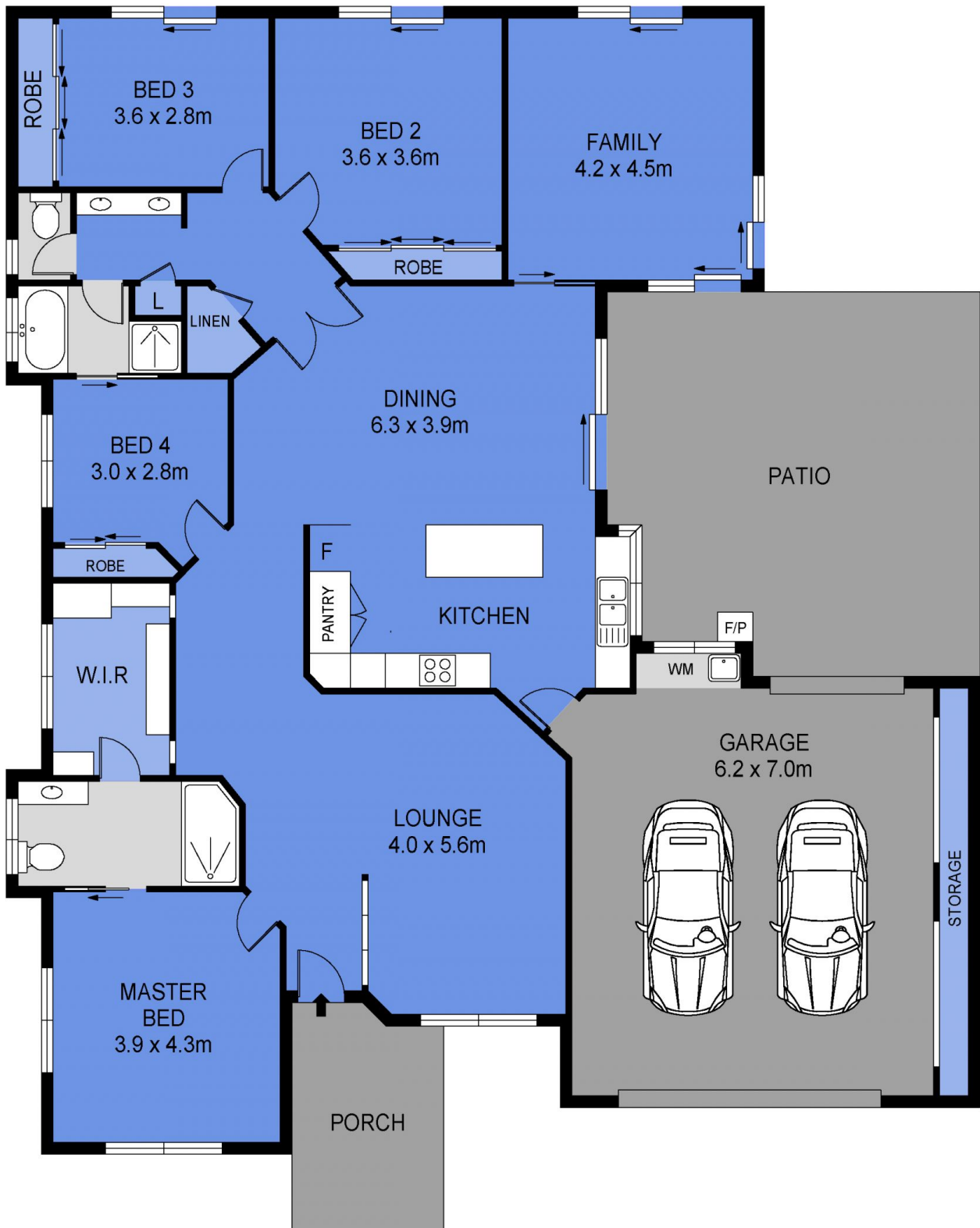
The floorplan is particularly well thought out ... you will utilise every room in this home which is the ideal size for most families. A total of three living zones flow over the one expansive level. On entry, a quiet lounge room with plush carpet provides the ideal spot to curl up with a book or watch a movie away from the hub of the home.

**Type** : House  
**Price** : Contact Agent  
**Land Size** : 1175 sqm  
**View** : <https://www.markcoleman.com.au/8149324>



**Mark Coleman Team**  
**0434169033**

[For full version visit the website](https://www.markcoleman.com.au)



Scale in metres. Indicative only. Dimensions are approximate. All information contained herein is gathered from sources we believe to be reliable. However we cannot guarantee its accuracy and interested persons should rely on their own enquiries

INT : 182m<sup>2</sup>  
 EXT : 42m<sup>2</sup>  
 GARAGE : 48m<sup>2</sup>



75-77 Koolan Cresent, Shailer Park