



2 Hovea Court SHAILER PARK QLD

4 2 2

Positioned on a superb 1190m² corner block, this spacious lowset residence offers a relaxing lifestyle in a quiet and leafy pocket of popular Shailer Park. A separate grassed area on the corner of Hovea & Celandine Street offers potential to add a shed or auxiliary unit/granny flat (subject to council searches and approval).

The home unfolds over the one level, with an open and free-flowing floorplan ideal for even the largest of families.

Inside, soaring 3m ceilings add to the sense of wide-open space. Freshly painted white walls add instant appeal, and a timeless backdrop to any kind of décor.

There are multiple, spacious living zones, allowing the

[For full version visit the website](https://www.markcoleman.com.au)

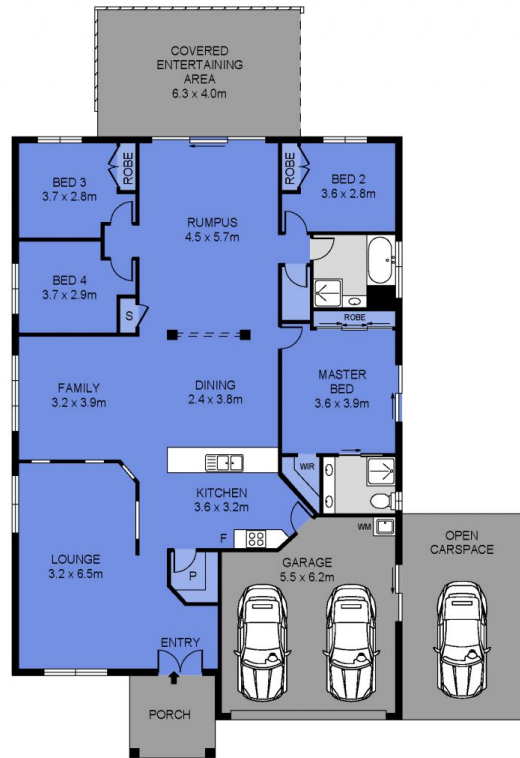
Type : House
Price : \$ 995,000
Land Size : 1190 sqm
View : <https://www.markcoleman.com.au/8101457>



Mark Coleman Team
0434169033

GARDEN SHED

NOT IN ACTUAL LOCATION



Scale in metres Indicative only. Dimensions are approximate. All information contained herein is gathered from sources we believe to be reliable. However we cannot guarantee its accuracy and interested persons should rely on their own enquiries.

INT : 172m²
EXT : 34m²
GARAGE : 31m²

2 Hovea Court, Shailer Park