



1/14 Maranda Street SHAILER PARK QLD

3 1 1

Great for first home buyers, investors or downsizers...

Welcome to where the living is easy! This immaculate townhome enjoys a private corner block position in a small complex of just six homes, surrounded by greenery. Enjoy the ultra-convenient "walk to everywhere" location where you will have every convenience at your doorstep. The Logan Hyperdome is within short walking distance as is a host of other local shops, restaurants, cafes, take-aways, parks, doctors, dentists, schools... you name it & be assured you can more than likely walk to it from here!

A delight to inspect, plenty of natural light infiltrates the interior which has a particularly cheery ambiance. On entry, you are greeted by a spacious lounge room which flows

Type : Townhouse
Price : \$ 560,000
Land Size : 118 sqm
View : <https://www.markcoleman.com.au/8071141>

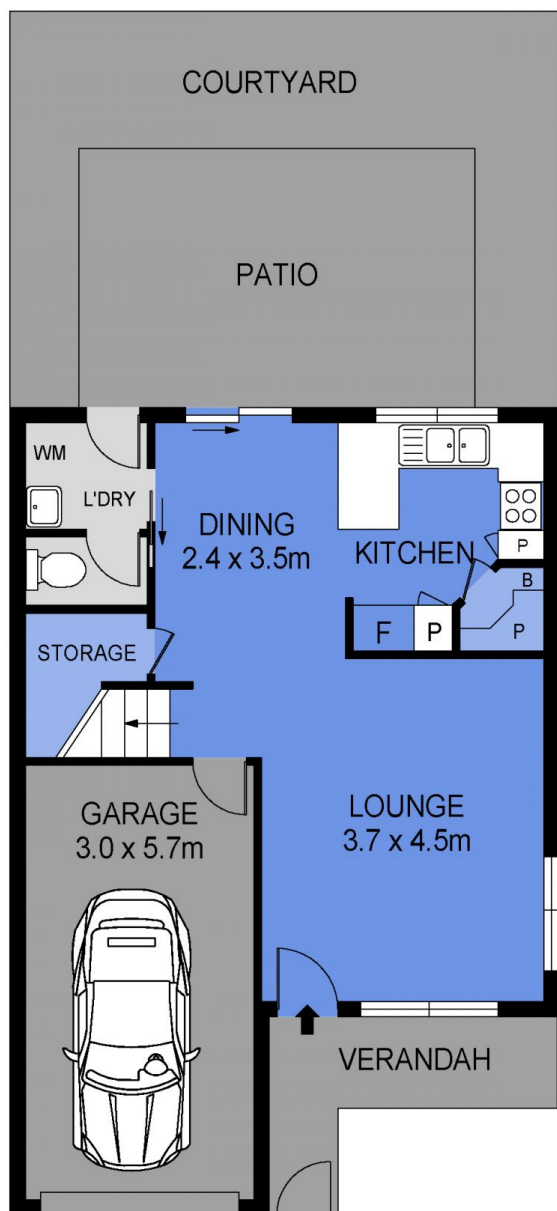


Nadine Nobile
0412722900

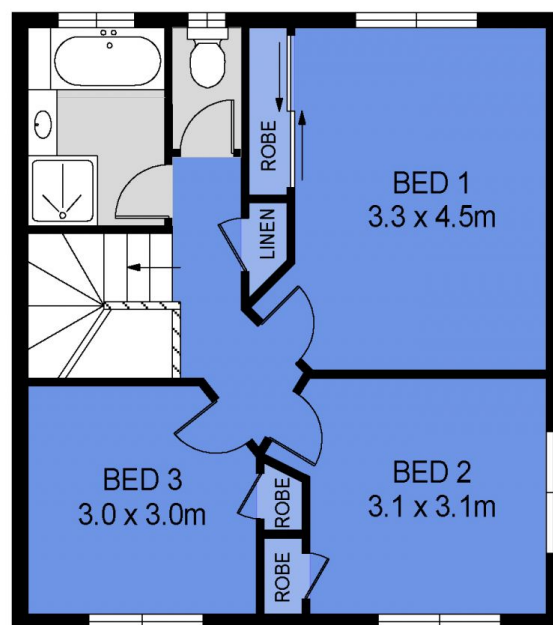


Mark Coleman Team
0434169033

[For full version visit the website](https://www.markcoleman.com.au)



GROUND FLOOR



FIRST FLOOR



Scale in metres. Indicative only. Dimensions are approximate. All information contained herein is gathered from sources we believe to be reliable. However we cannot guarantee its accuracy and interested persons should rely on their own enquiries

INT : 102m²
 GARAGE : 17m²
 EXT : 44m²

1/14 Maranda Street, Shailer Park