



## 40 Mungala Street ROCHEDALE SOUTH QLD

4 2 4

Unfolding over two spacious levels, this immaculate residence offers complete dual living. Ideal for extended families, home-based businesses or those simply craving separation and space, this home has the versatility to meet your needs. The home is set on a beautiful 708m2 block with a picturesque backyard - a dream for children with its treehouse, swings and even a mini putting green.

**Type** : House  
**Price** : \$ 1,122,000  
**Land Size** : 708 sqm  
**View** : <https://www.markcoleman.com.au/8014768>

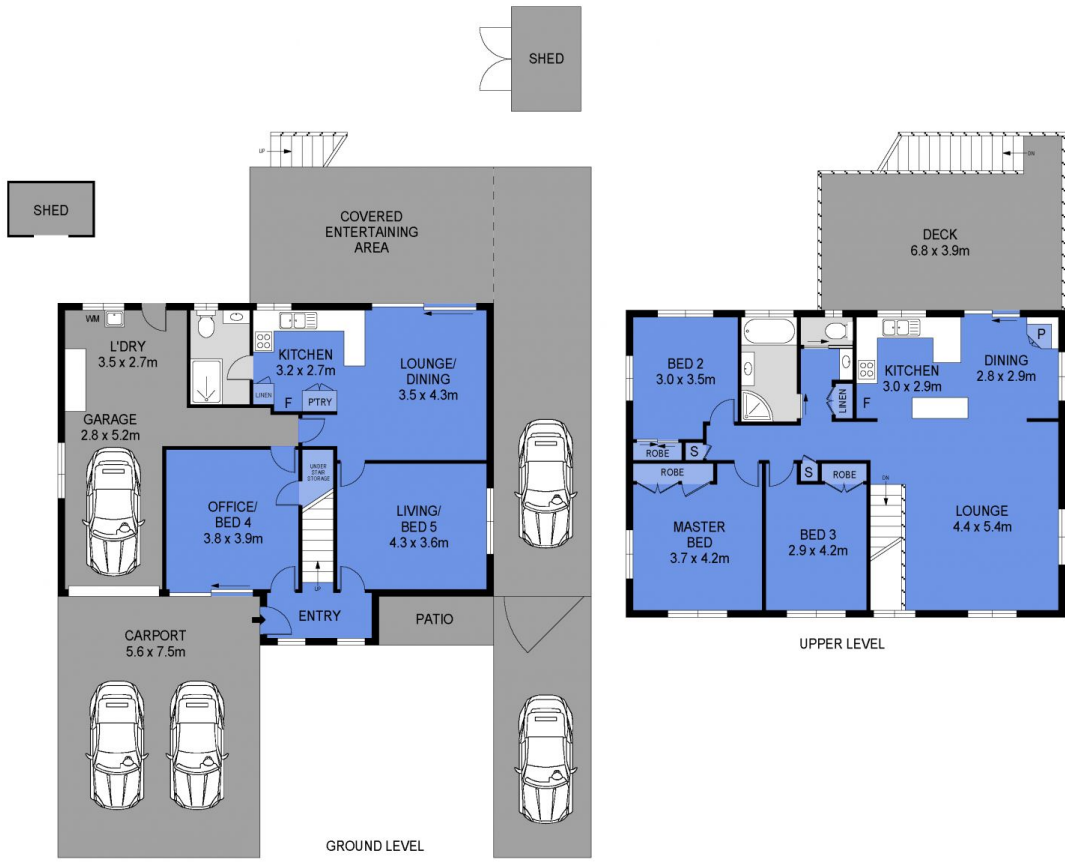
On the entry, lower level you will find:

- ? Bedroom Four/Large Office.
- ? Freshly presented bathroom with shower, white vanity and toilet.
- ? Well -appointed kitchen with stainless steel oven, plenty of cupboard & bench space and a pantry.



**Mark Coleman Team**  
**0434169033**

[For full version visit the website](https://www.markcoleman.com.au)



Scale in metres. Indicative only. Dimensions are approximate. All information contained herein is gathered from sources we believe to be reliable. However we cannot guarantee its accuracy and interested persons should rely on their own enquiries

INT : 174m<sup>2</sup>  
 EXT : 159m<sup>2</sup>  
 GARAGE : 28m<sup>2</sup>



40 Mungala Street, Rochedale South