



## 66A Shailer Road SHAILER PARK QLD

4 2 6

Prepare to be "wowed" ? the full package awaits you here!

Built in 2022 and presenting better than new, this sophisticated residence is an incredibly RARE find. Sprawling over the one expansive level with a floorplan designed for modern family living, an exceptional lifestyle awaits. This home has been designed without compromise, with the absolute finest of fittings and finishes throughout and impeccable attention to detail. Set to surprise you with its sheer size and generous spaces, soaring high ceilings further add to the sense of wide-open space.

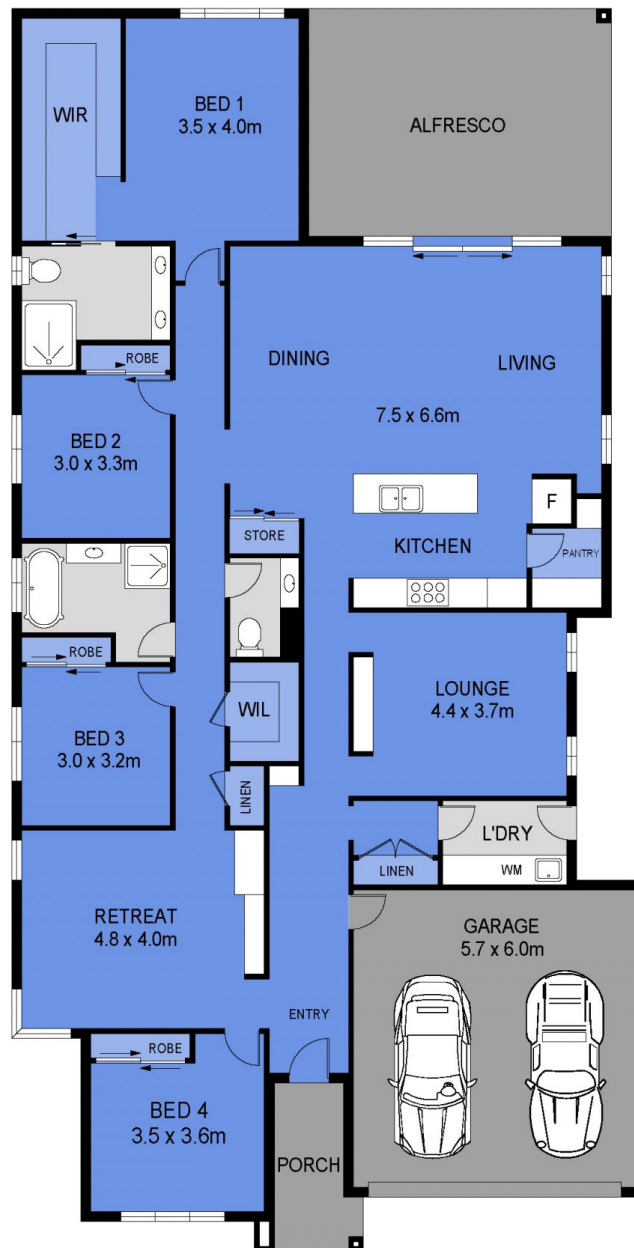
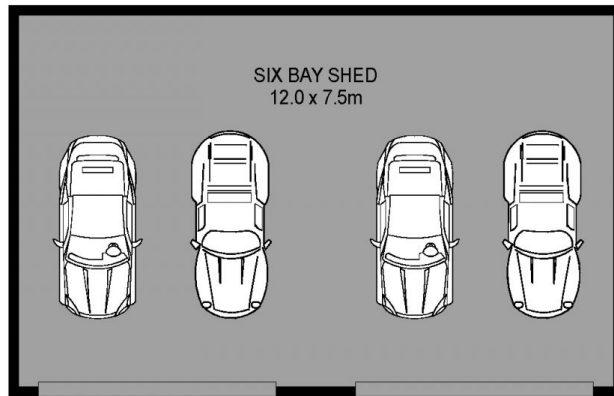
The home is positioned on a STANDOUT fully useable

[For full version visit the website](https://www.markcoleman.com.au)

**Type** : House  
**Price** : \$ 1,430,000  
**Land Size** : 1220 sqm  
**View** : <https://www.markcoleman.com.au/8007861>



**Mark Coleman Team**  
**0434169033**



Scale in metres. Indicative only. Dimensions are approximate. All information contained herein is gathered from sources we believe to be reliable. However we cannot guarantee its accuracy and interested persons should rely on their own enquiries

INT : 223m<sup>2</sup>  
GARAGE : 38m<sup>2</sup>  
EXT : 30m<sup>2</sup>

66A Shailer Road, Shailer Park